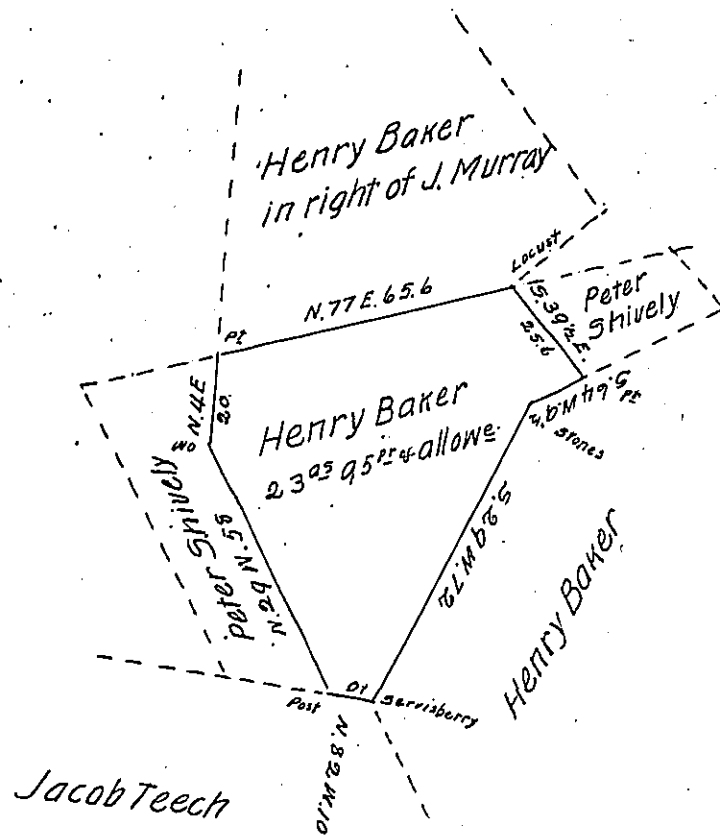


Courses and Distances

- N. 77 E. 65.6
- S. 39 1/2 E. 25.6
- S. 64 W. 9 1/2
- S. 29 W. 72
- N. 82 W. 10
- N. 29 W. 58
- N. 4 E. 20



Situate in Toboyne Township Perry County and
 contains Twenty three acres Ninety Five perches
 and allowance of Six per Cent for roads &c. part of
 35^{ac} 31^{pc} and allowance Surveyed to Henry Baker
 May 9th 1828 In pursuance of a warrant granted
 Sd Baker dated May 6th 1828. Surveyed as above
 May 9th 1828

per Wm Wilson D.C.

Gabriel Hiester Esq }
 Surveyor General }

IN TESTIMONY that the above is a copy of the original remaining on file in
 the Department of Internal Affairs of Pennsylvania, made
 conformably to an Act of Assembly approved the 16th day of
 February, 1833, I have hereunto set my Hand and caused
 the Seal of said Department to be affixed at Harrisburg,
 this seventh day of March 1904

John P. Brown
 Secretary of Internal Affairs.